

# ONE TAM



ONE TAM: THE NEXT FIVE YEARS  
Going Further, Together



## CALIFORNIA LANDSCAPE STEWARDSHIP NETWORK



### CALIFORNIA'S PUBLICLY & PRIVATELY-OWNED LANDS

Californians have invested in protecting 49% of lands within the state, now it's time to fully invest in their long-term stewardship. The health of our communities depends on the health of our environment.

## Collaborating for Stewardship at a Landscape Scale

Public agencies, private landowners and nonprofit organizations across California are working together at a statewide level to care for our lands, water and wildlife. Effective stewardship at this level requires a significant investment of resources, and deeply integrated collaboration among these entities, some of which are listed here. Together, they are advancing the science, policy and practice of landscape scale stewardship needed to protect California's rich biodiversity and natural heritage for future generations, and represent broad stakeholders and constituencies including more than 500 organizations, and more than one million volunteers.



**CA COUNCIL OF LAND TRUSTS**  
Conserving California's extraordinary land and water resources through a strong network of land trusts with one cohesive voice across urban and rural communities P, C, F, L



**CA DEPT OF FISH AND WILDLIFE**  
Managing California's diverse fish, wildlife, and plant resources, and habitats for their ecological values, their use and public enjoyment. P, S, L, T, G



**CA INVASIVE PLANT COUNCIL**  
Protecting California's environment and economy from invasive plants P, S, C, F, L, T, G

### KEY FUNCTIONS

- P = Policy Focus
- S = Science Focus
- C = Convening Focus
- F = Fundraising
- L = Manage Lands
- T = Technical Assistance
- G = Grantmaking



**CA LANDSCAPE STEWARDSHIP NETWORK** Innovating long-term solutions to address barriers for operationalizing working at scale, convening exchanges to expand and improve landscape stewardship practices. P, C, T



**CALANDSCAPE CONSERVATION PARTNERSHIP** Enhancing collaborations among public & private sectors, and Native American tribes, to engage in integrated conservation and adaptation. S, C, L



**CA NATIVE PLANT SOCIETY** Engaging volunteers and professionals in conserving and stewarding California's native biodiversity. P, S, C, F, T



**CA NATURAL RESOURCES AGENCY** Protecting and managing the state's natural, historical and cultural resources using creative solutions based on science, collaboration and respect. P, S, L, T, G



**CA RESOURCE CONSERVATION DISTRICTS** Working in partnership with public and private landowners to deliver innovative stewardship and conservation solutions. P, S, C, T, G



**CA STATE PARKS NATURAL RESOURCES** Leading landscape- and ecosystem-level resource protection and stewardship to help preserve the State's extraordinary biological diversity, protecting its most valued natural and cultural resources. P, L



**CA STRATEGIC GROWTH COUNCIL** Supporting healthy, thriving and resilient communities for all through a suite of investment programs and initiatives. P, S, T, G



**FEDERAL LAND MANAGERS** Leading landscape-scale management for federal lands (agencies include: NPS, USFS, USFWS, BLM, etc.) P, S, L, T

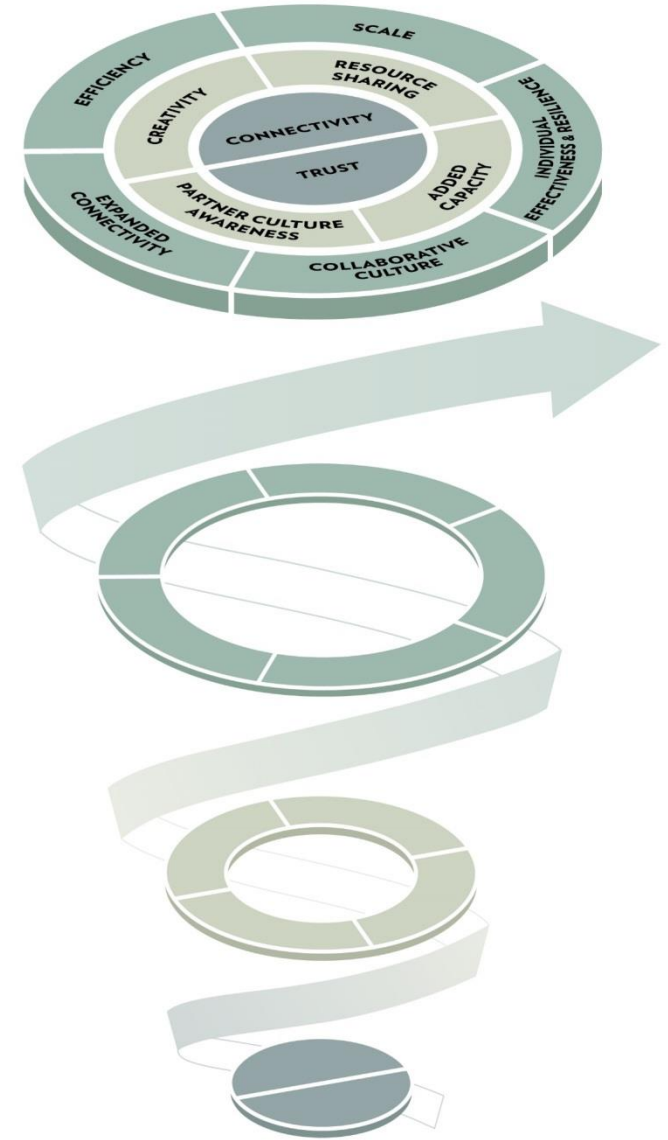
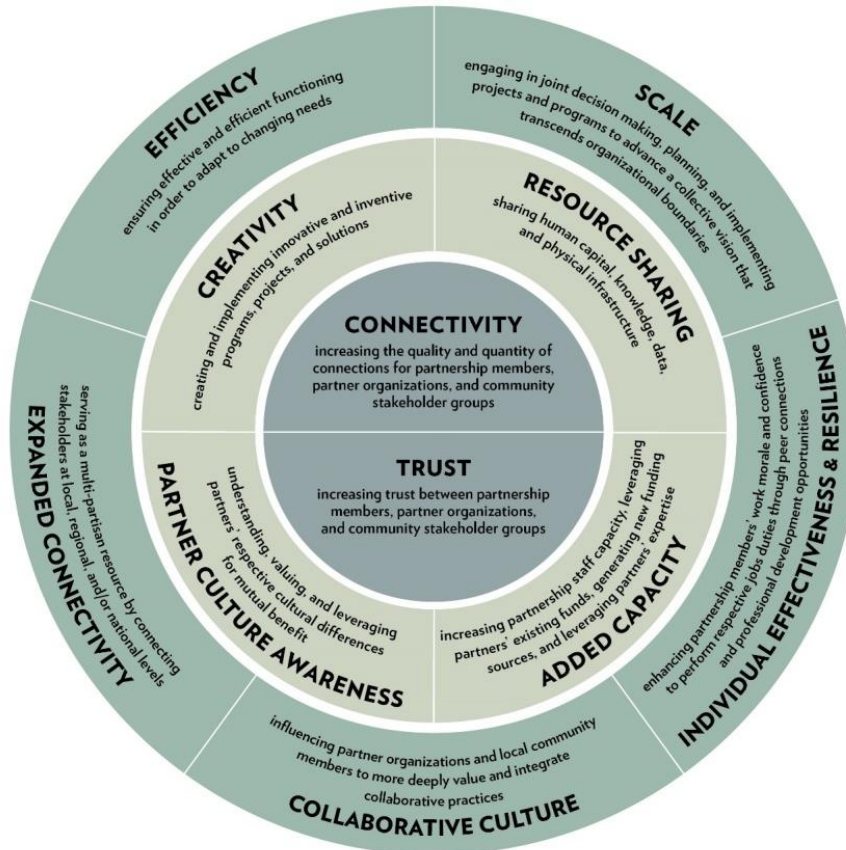


**POINT BLUE** Reducing the impacts of climate change, habitat loss, and other environmental threats while developing nature-based solutions to benefit wildlife and people. S, C, T

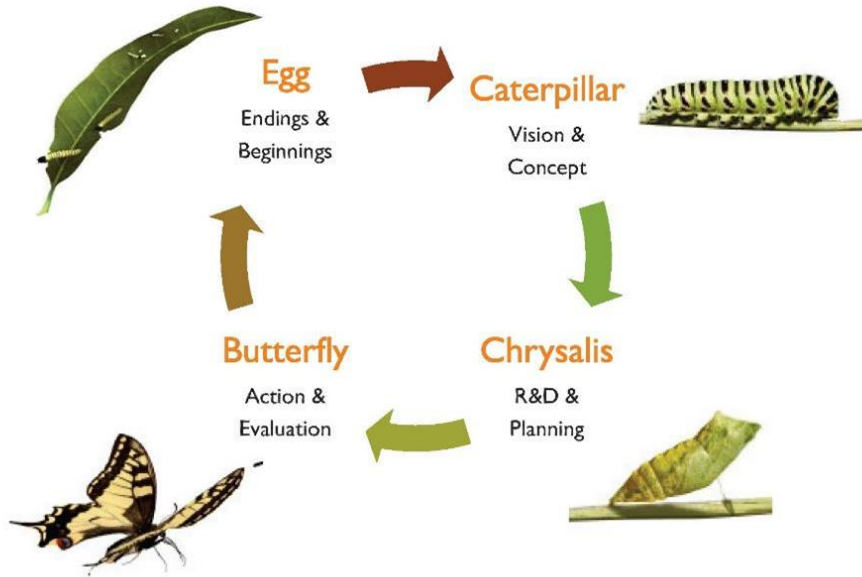


**UC NATURAL RESERVE SYSTEM** Advancing awareness and scientific understanding of California's ecological diversity to support long-term stewardship. S, L

# PARTNERSHIP IMPACT MODEL™

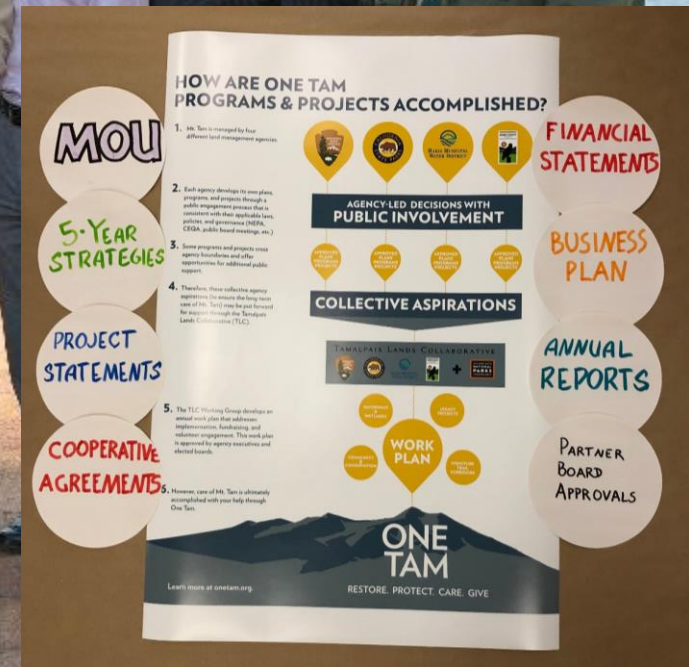


## Partnership Network Life Cycle



**INCUBATE  
INNOVATE  
ITERATE**





One Tam Steering Committee 2014

**18** priority projects identified

**9** projects initiated

**5** major trail projects selected and endorsed by partners

One Tam priority projects include wetland, creek, forest, and trail corridor restoration. Several projects have already begun, and others will be implemented as funding becomes available. The recently launched restoration of West Peak, a One Tam cornerstone project, is already seeing enormous public support.

**9,800** volunteers engaged

**78** youth program participants and internships

**65%** of Mt. Tam's 290-mile road and trail network surveyed and treated for weeds

**25** miles of trails repaired

In just its first three years, One Tam has created and sustained invaluable youth programs, expanded volunteer opportunities, provided numerous ways for the community to engage with our work, and initiated new conservation science efforts across the mountain.

**25,000** community members engaged

**1,000+** One Tam members

**120** community events attended

**100,000** households reached through direct mail marketing

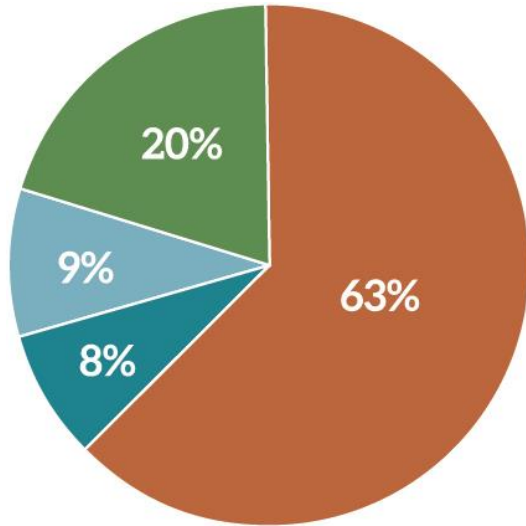
Whether through the website, social media, publications, or local events, One Tam engages a broad range of community members in learning about and supporting Mt. Tam. Our "Roving Ranger" mobile trailhead continues to bring the wonders of the mountain to communities across Marin County and beyond.



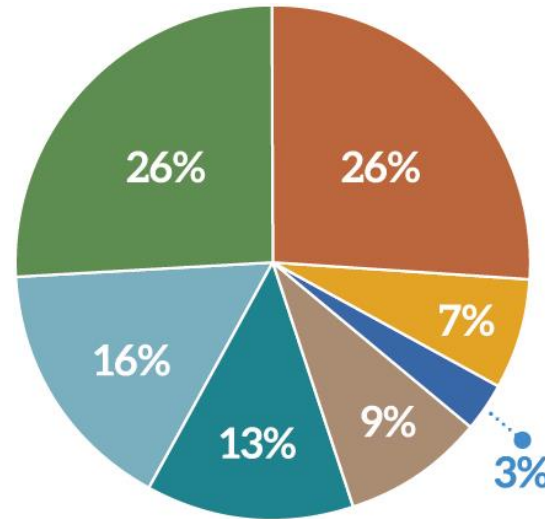


- 80% increase in partner **trust**
- 287% increase in community **connectivity**
- 60% increase in **daily interactions** and 185% increase in **weekly interactions**
- 345% increase in sharing **equipment**
- 157% increase sharing **skill sets** (design, ecology, etc.)
- 180.4% increase sharing **data & information**
- 476% increase sharing **volunteers**
- Increased creativity and **problem solving**
- Increased appreciation of different **agency cultures**
- Increased **professionalism**
- 98% **enjoy** participating
- **Work morale & confidence** increased
- **Funding sources** layered in ways that make sense
- Increase in **new funders**

## \$6.3M RAISED FOR PROGRAM IN FIRST 4 YEARS



**ONE TAM INCOME BY SOURCE 2015**  
Total = \$928,175.00



**ONE TAM INCOME BY SOURCE 2018**  
Total = \$972,000.00





- Remove **state silos** that negatively impact collaborative governance.
- Define **clear support and leadership roles** for the state when advancing landscape-scale efforts to maximize impact and avoid duplication.
- Provide **technical assistance** and impact evaluation to advance, operationalize, and fund collaboration, effective project implementation, and long-term stewardship at state, regional, and local levels.
- Develop interagency **data sharing** policies and protocols to enable broader data sharing and collaboration.
- Dedicate **multi-year funding** to facilitate efficient and effective regional land management (stewardship).
- Seek state **permitting efficiencies**.

A topographic map of California, showing the state's outline and internal terrain features. The map uses a color gradient from green (low elevation) to brown and tan (high elevation) to represent different elevations. Major mountain ranges and valleys are visible.

KEVIN WRIGHT  
KWRIGHT@MARINCOUNTY.ORG  
415.497.3553